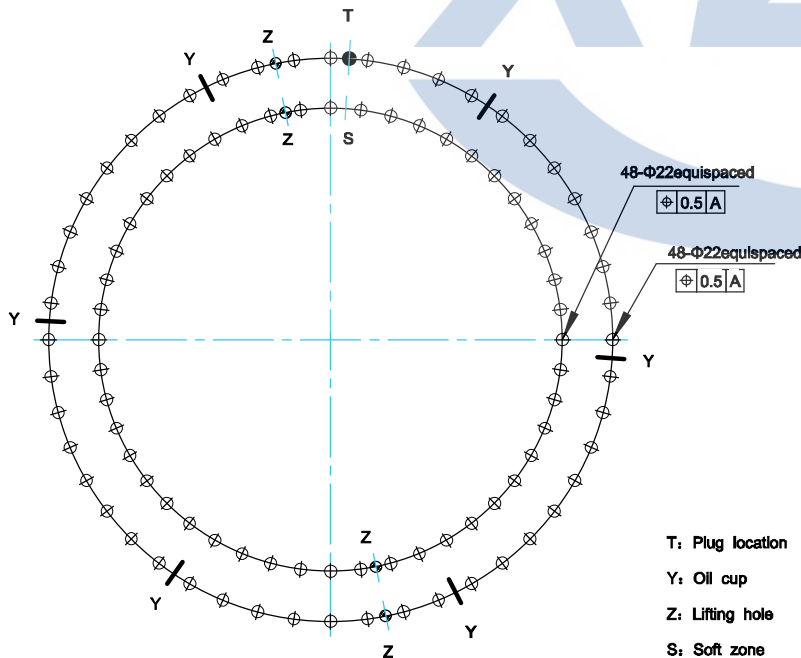
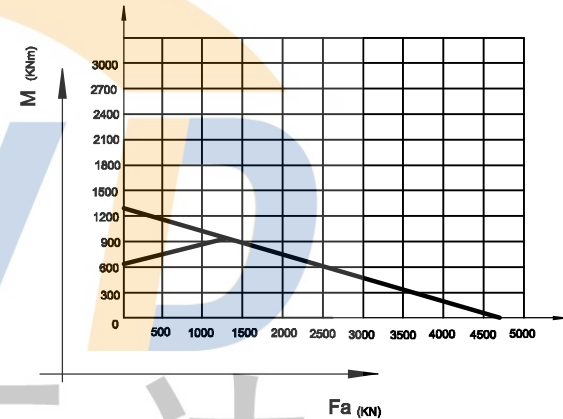
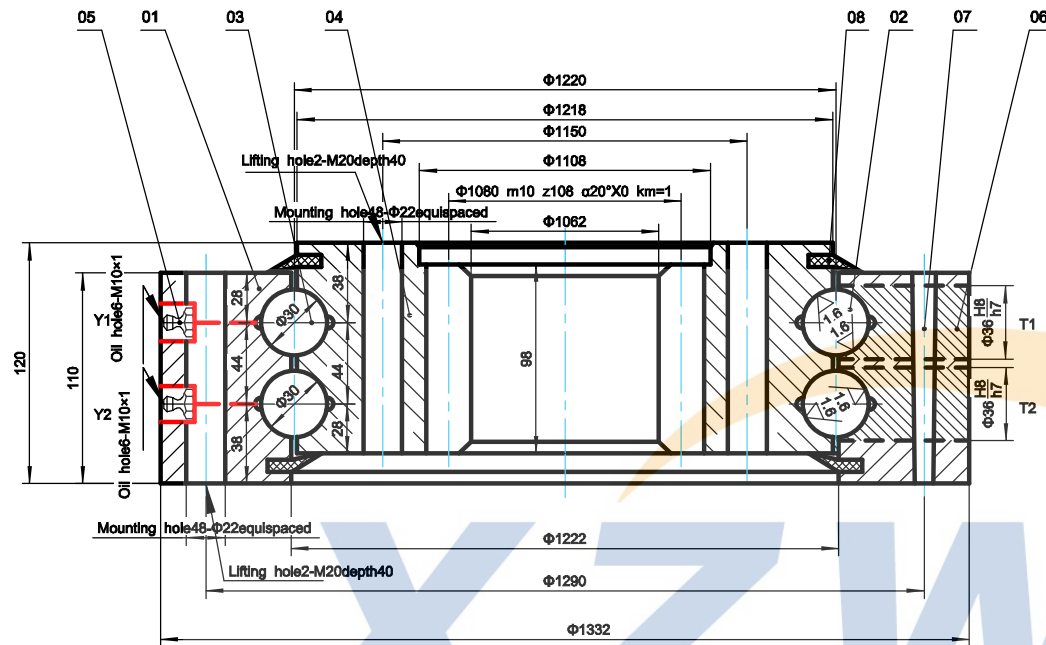


Module	m	10
Teeth no.	z	108
Teeth pressure angle	α	20°
Modification coefficients	x	0
Reduction coefficients	km	1
Precision(GB10065-88)		10
Average base tangent length and deviation	W	354.62 +0.02 -0.44
Spanned tooth count.	k	12
Base tangent length change tolerances	Fw	0.16



Note:

- Undeclared chamfer 1.5×45°
Edges chamfer
- Raceway of inner & outer ring Induction hardened, hardness: 55~62HRC
Depth: ≥3mm
- Inner & outer ring quenched & tempered, hardness: 207~262HB
- Axial & radial clearance: 0.08-0.45mm

T: Plug location
Y: Oil cup
Z: Lifting hole
S: Soft zone

No.	Standard	Component	Material	Model	Qty.	Remark
08	HG/T2811	Seals	NBRI-3	W17	2	
07	GB117-76	Pin	CN45	Φ12	2	
06		Plug	CN45	Φ36	2	
05	JB/T7940.7	Oil nipple	Component	M10×1	2×6	
04	GB/T699	Inner ring	50Mn		1	
03	GB/T308-2002	Ball	GCr15	30	222±1	
02	HG/T2349	Spacer	Nylon	D30	222±1	
01	GB/T699	Outer ring	50Mn		1	
		Model	WD-073.30.1220	Drawing		Weight 387kg
		Name	Slewing Bearing	Qty.		Scale
		Material	50Mn	Total 1 page		The 1st page
Design	Standard					
Check		XUZHOU WANDA SLEWING BEARING CO.,LTD				
Process	Approve					
Date		TEL: +86 516 83309366 FAX: +86 516 83915766 http://www.slew-bearing.com				